

ShareFest 2017

Final Report

Tuesday, September 19, 2017

Table of Contents

Introduction 1

About ShareFest..... 1

People 3

Recipient Groups..... 4

Marketing..... 6

Dispatch and Donation Collection and Swapping Site 7

Donation Process 8

Donation Results 9

Impact 13

Financial 16

Thank You!..... 17



Introduction

ShareFest 2017 marked the 13th year for the annual donation drive that occurs in Oxford during Miami University Move-Out Week. ShareFest continued growing in 2017. Donation pickup requests increased 7% from 2016 and donations increased 12%. Volunteers and sponsors from Miami University, nonprofit agencies, religious organizations, businesses, the Oxford community, and more continue to sustain this event.

About ShareFest

Mission Statement

ShareFest is a service and environmental nonprofit corporation dedicated to the collection and redistribution of items donated by Miami University students and the Oxford community at the end of the academic year. Collected items benefit residents in need and social service agencies throughout the region.

Purpose

The purpose of ShareFest is to:

1. Help individuals in need by providing them with access to furniture, household goods, clothing and food that are donated by Miami University students or by other community members at the end of the academic year.
2. Teach sharing and environmental ethics and an awareness of diverse backgrounds to the young people who are students at Miami University.
3. Protect and preserve the environment by preventing usable items from going into the landfill.
4. Help the City of Oxford dispose of unwanted items and help clean the City quickly.

History

ShareFest has experienced tremendous growth since beginning in 2005. That year, ShareFest served 65 families, followed by 270 in 2006, over 300 in 2007 and 2008. In 2009, ShareFest served over 600 families by nine recipient groups. Families were able to furnish homes with items such as couches, dressers, desks and kitchen tables. In addition, many teenagers received high-quality clothing items.

In 2010, the ShareFest Committee began allowing groups to sell the collected items. It was a condition that proceeds would benefit their clients.

In September 2013, ShareFest was established as an official nonprofit corporation with the State of Ohio. The nonprofit corporation was set up to manage event finances and donation collection. The ShareFest nonprofit corporation is separate from groups that receive donations during the move out week drive.

In summer 2014, ShareFest received its 501(c)(3) tax exemption status with the Internal Revenue Service (IRS), effective September 9, 2013. ShareFest continues to support the nonprofit partners and agencies that participated in previous years.

The following seven recipient groups participated in ShareFest 2017 and received donations:

- Butler County Children Services
- Butler County and Preble County Success
- The Family Resource Center
- Habitat for Humanity of Greater Cincinnati
- Lighthouse Food Pantry
- Ohio Valley Goodwill Industries
- Oxford Community Choice Pantry



People

Board

- **President Dr. Carol Michael**
Miami University Emeritus and Oxford Resident
- **Vice-President Holli Morrish**
Talawanda School District
- **Treasurer Karen Baker**
Baker & Associates CPAS LLC
- **Secretary Jung-Han Chen**
City of Oxford Community Development Department
- **Dr. Denise Taliaferro Baszile**
Miami University College of Education, Health and Society

Planning Committee

The following people dedicated countless hours attending meetings to plan and coordinate ShareFest 2017.

- **Planning Committee Chair Jung-Han Chen**, City of Oxford Community Development Department
- **Rob Abowitz**, Miami University Office of Residence Life
- **Gena Bowles**, Butler County Children Services
- **Sharon Hannon**, Ohio Valley Goodwill Industries
- **Joann Knott**, Lighthouse Church and Pantry
- **Dr. Carol Michael**, Miami University Emeritus and Oxford Resident
- **Mike Moore**, Habitat for Humanity of Greater Cincinnati
- **Jen O'Brien**, Miami University Off-Campus Outreach
- **Geoff Robinson**, The Family Resource Center
- **Chrissy Rolfes**, Butler County and Preble County Success Program/Talawanda
- **Dr. Edna Southard**, Oxford Community Choice Pantry
- **Ben Spilman**, Miami University Police/Parking
- **Jade Wadley**, Habitat for Humanity of Greater Cincinnati
- **Andrew Wilson**, City of Oxford Community Development Department



Recipient Groups

The number of groups receiving ShareFest donations varies from year to year. In 2017, the following seven agencies and organizations received ShareFest donations.

Butler County and Preble County Success

The Butler County Educational Service Center's Success Program removes non-cognitive barriers to learning by building bridges between home, school and community to improve school success and self-reliance. Butler County Success works with families that are at 200% of the poverty guideline or lower in nine nearby school districts, and is currently serving approximately 2,000 students.



Butler County and Preble County Success give their ShareFest donations to families free of charge.

Butler County Children Services

BCCS is the county agency committed to protecting children and strengthening families. Since 2005, Butler County Children Services staff has given clothing, housewares, and furniture collected from ShareFest to hundreds of families in need, free of charge.



The Family Resource Center

The FRC serves the Talawanda School District and provides emergency assistance with basic needs such as shelter, energy, water, and clothing. The FRC also coordinates services with community partners to enhance the ability of individuals to become more self-sufficient through education, employment, and money management.

Between 2005 and 2009, dozens of families received free furnishings and housewares because of the FRC's participation in the event. Since 2010, the FRC sells its ShareFest donations in order to maintain the funding for its services to the community.



Habitat for Humanity of Greater Cincinnati



HFHGC is part of a global, nonprofit housing organization operated on Christian principles that seeks to put God's love into action by building homes, communities and hope.

HFHGC is dedicated to eliminating substandard housing locally and worldwide through constructing, rehabilitating and preserving homes, by advocating for fair and just housing policies, and by providing training and access to resources to help families improve their shelter conditions. In the Oxford area, HFHGC has helped 16 families and has two active neighborhoods, Reckford Woods and Reaghs Way.

Habitat for Humanity sells its ShareFest donations at the Habitat for Humanity ReStores. The proceeds will be used to help fund its mission to eliminate substandard housing in Oxford and beyond.

Lighthouse Food Pantry

The Lighthouse Food Pantry serves 400-500 families each month and is based in Hamilton, Ohio. Since 2010, the Lighthouse sells its ShareFest donations in order to maintain the funding needed for its services to the community.



Ohio Valley Goodwill Industries



Ohio Valley Goodwill Industries strives in an ever-improving mode to be the leader in quality and effectiveness of vocational, educational, social and human services in the State of Ohio. As a member of Goodwill Industries International, Ohio Valley Goodwill Industries is a part of the world's largest and most successful network providing employment and training services

for people with disabilities, our nation's veterans, and others with barriers to employment. Annually, Goodwill assists more than 3,500 people, and in 2016 it helped more than 1,000 people get jobs in the communities it serves.

Ohio Valley Goodwill Industries sells its donations at the Oxford Goodwill Store to help individuals with disabilities and veterans to receive employment and training services and get jobs in the community.

Oxford Community Choice Pantry

The mission of the OCCP is to alleviate hunger and provide nutrition information to the families and individuals in need who live in the Talawanda School District. The OCCP serves approximately 300 families in the Talawanda School District and honors the dignity of shoppers by allowing them to choose their items according to their household size and the federally recommended nutritional requirements. The OCCP also provides customers with nutritional information.



The OCCP will provide its ShareFest donations to shoppers free of charge.

Marketing

The ShareFest 2017 Planning Committee marketed the event in the various ways listed below.

1. Emails to off-campus students from outgoing Secretary for Off-Campus Affairs Billy Fitzgerald and incoming Secretary Sean Perme
2. Emails to on-campus students
3. Email to Chestnut Fields permit holders from Miami University Parking Services
4. Facebook: ShareFest Page and ShareFest 2017 Event
5. Miami University Student Affairs Facebook Page and Twitter
6. Miami University Parents Office Email Newsletter
7. Religious organizations
8. City of Oxford website
9. City of Oxford utility bills
10. Ohio Valley Goodwill Industries website, social media, and promotional video
11. Cincinnati.com postings by Ohio Valley Goodwill Industries
12. Face-to-face conversations
13. Greek Spring Clean door hangers
14. Information from Property Managers
15. Signs in residence hall corridors and drop-off locations
16. Residence hall move out checklists
17. Signs at Chestnut Fields



ShareFest Move Out Week
Wed. May 10 - Tue. May 16

Do you want to help people in need, protect the environment, and get rid of unwanted things during move out?

Donate to ShareFest 2017!

Off-Campus Students

- Schedule a pickup and volunteers will come to your house or apartment within a one-hour window or drop off your donations to the ShareFest site
- Donate sofas, dining room tables and chairs, appliances, beds, dressers, lamps, mirrors, clothing, food, and more
- Request a tax deduction form

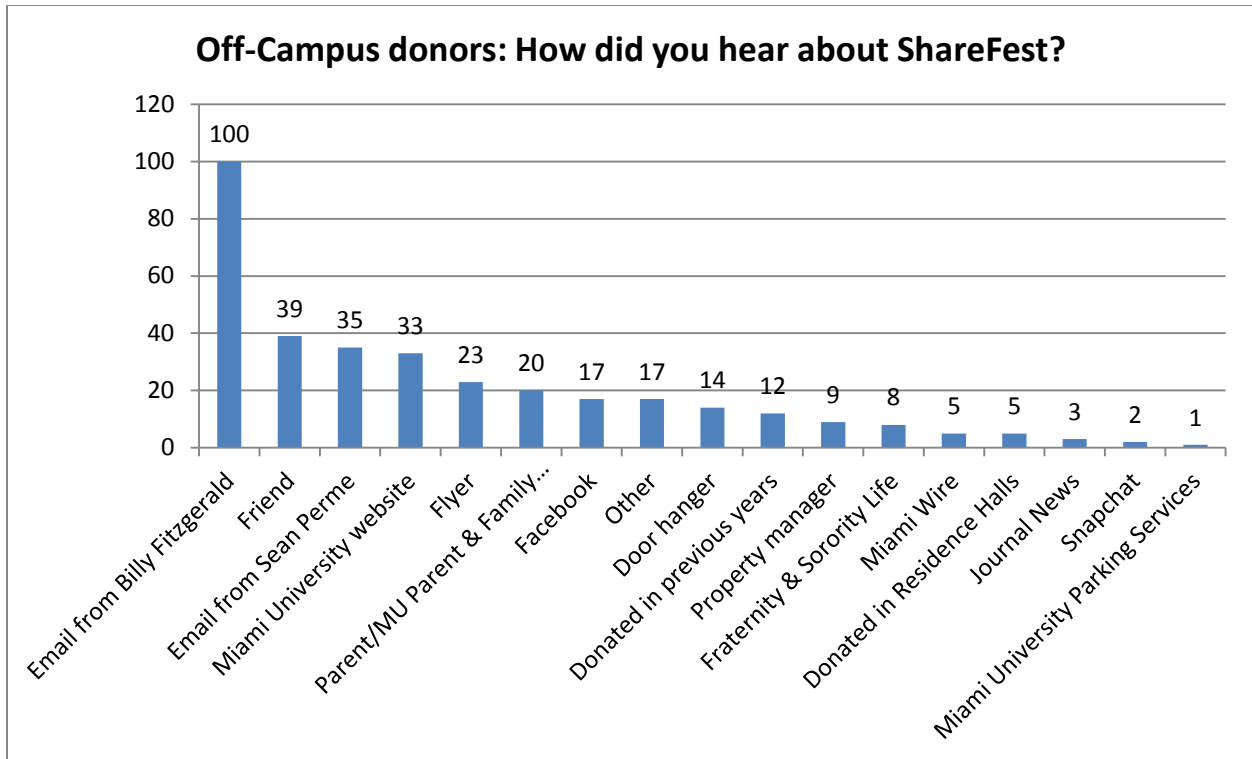
Schedule a pickup or get more info »
sharefestoxford.com



MOVE OUT WEEK!
Donate reusable housewares, furniture,
clothes, and nonperishable food »

The donation pickup request form asked donors how they heard about ShareFest 2017. Figure 1 ranks marketing methods in descending order.

Figure 1: How did you hear about ShareFest 2017?

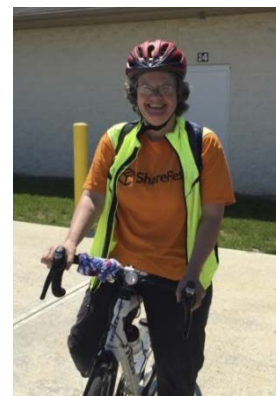


Combined, emails from going Secretary of Off-Campus Affairs Billy Fitzgerald and incoming Secretary Sean Perme generated 135 responses. Surprisingly, just one donor reported hearing about ShareFest from the Miami University Parking Services email, despite a significant increase in traffic to the ShareFest website after students received that message.

Dispatch and Donation Collection and Swapping Site

Miami University allowed ShareFest 2017 recipient groups and organizers to use the Chestnut Fields Parking Lot, located at 101 West Chestnut Street for dispatch, donation collection, and swapping. Chestnut Fields is the former site of Talawanda High School.

The site was perfect for access to on- and off-campus locations and it offered abundant parking for volunteers. Volunteer check-in and dispatchers were set up next to the Chestnut Field House. Ohio Valley Goodwill provided four trailers, two of which it donated for use by other recipient groups. Miami University also allowed ShareFest volunteers to use the Chestnut Field House restrooms.



Recipient groups provided lists of needed items. The dispatcher used the lists to assign pickups and the on-site volunteers used the lists to direct donations as they arrived for swapping and drop-off.

The dispatcher communicated with donors, volunteers, recipient groups, and the public through social media, email, text messaging, and phone.

Donation Process

Off-Campus

Off-campus Miami University students and Oxford residents donated sofas, beds, dining room table sets, appliances, housewares, clothing, food, and much more. Donors scheduled donation pickups on the ShareFest website. The online form contains fields for entering:

- donor name
- address/special entry instructions/house name
- phone number and email address
- types and quantities of donations
- tax deduction form yes/no
- how the donor heard about ShareFest



Due to Uptown traffic and access issues, ShareFest does not allow donors living on High Street to schedule pickups between 11:00 AM and 1:00 PM.

New for 2017, ShareFest allowed donors to schedule same-day pickups by calling Dispatch or filling out the form online. Typically, donors schedule at least one day in advance. The ShareFest website stated there was no guarantee of same-day availability. However, ShareFest did not have to turn away any same-day requests and twelve donors took advantage of the opportunity.

On-Campus

Forty-three Miami University residence halls participated in ShareFest 2017. Four residence halls did not participate due to closure for renovation during the 2016-17 academic year. On-campus students donated items at designated locations within each residence hall. On-campus students continued to donate large quantities of food, clothing, small appliances, and housewares. The on-campus collection sites were well-organized, allowing volunteers to pick up donations quickly.



Donation Drop-Offs

At least 75 donors dropped off donations to the ShareFest 2017 dispatch and collection site. Several donors made multiple trips to the drop-off site. This number compares to 37 donors who dropped off donations in 2016, or an increase of 103%.

Donation Tracking

The ShareFest 2017 Planning Committee improved donation tracking by creating four distinct inventory sheets for on-campus donations, off-campus donations, donation drop-offs, and same day, off-campus pickup requests. The four inventory sheets were similar but collected different data. Volunteers inventoried items as they collected them from off-campus residences or residence halls, or at the time of donation drop-off.

Same Day Pickup

INVENTORY THIS DONATION ON BACK -->

Date & Time Required: May 2017

Name: _____

Address: _____

Home/Phone/Fax/Cell: _____

Email Address: _____

Tax-deductible items? Yes No

How did you hear about us? _____

Items Being Donated: _____

Oregon Center for Autism - 503-204-6130
Medical Bill - 503-204-6130
Butte County Health Dept. - 530-843-1770

Donation Results

For ShareFest 2017, 297 off-campus donors scheduled pickups online. This represents an 8% increase from 275 requests in 2016, but slightly lower than the record 299 requests in 2015. In 2017, three donors canceled pickups, six donors were not home, and volunteers turned away just one junk donation. After we removed cancelations and junk pickup requests, the remaining 288 requests represent an increase of 7% from 2016 and set a new record for ShareFest.

Figure 2 displays the year-by-year adjusted pickup requests from 2008 through 2017.

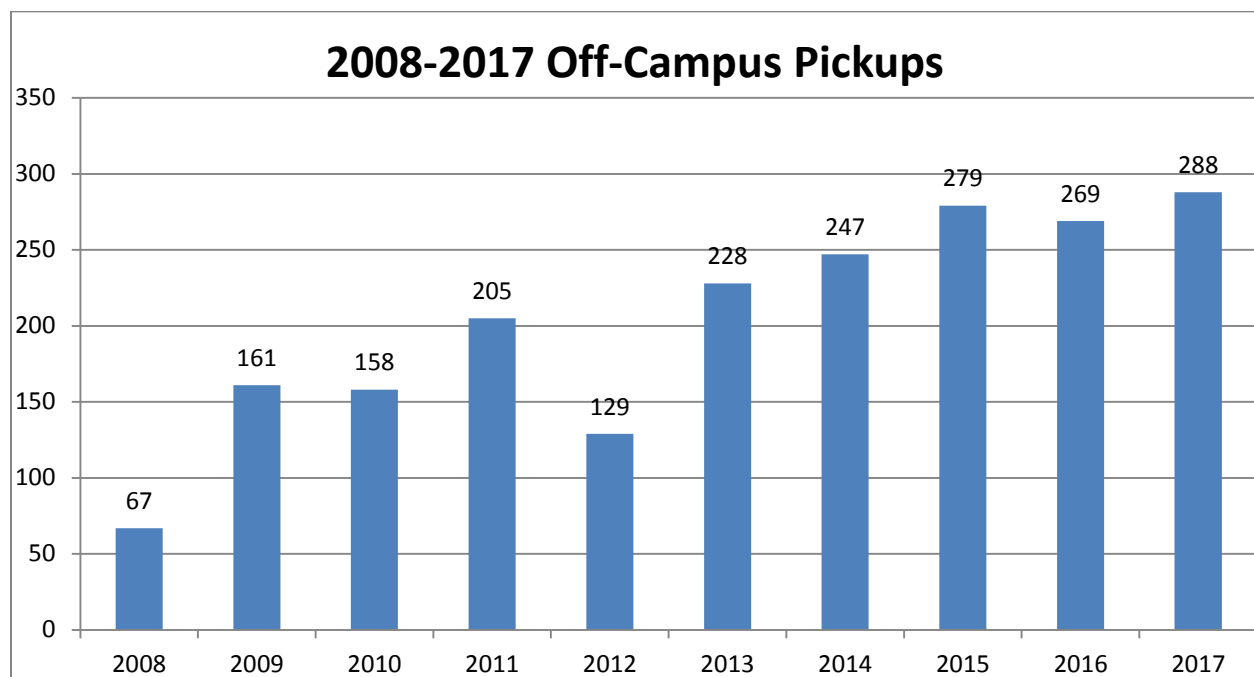


Figure 2: Off-Campus Pickups by Year

Dispatchers allocate pickups based on recipient group needs and the number of volunteers and trucks available at a given moment. Figure 3 displays the percentage of pickups per recipient group.

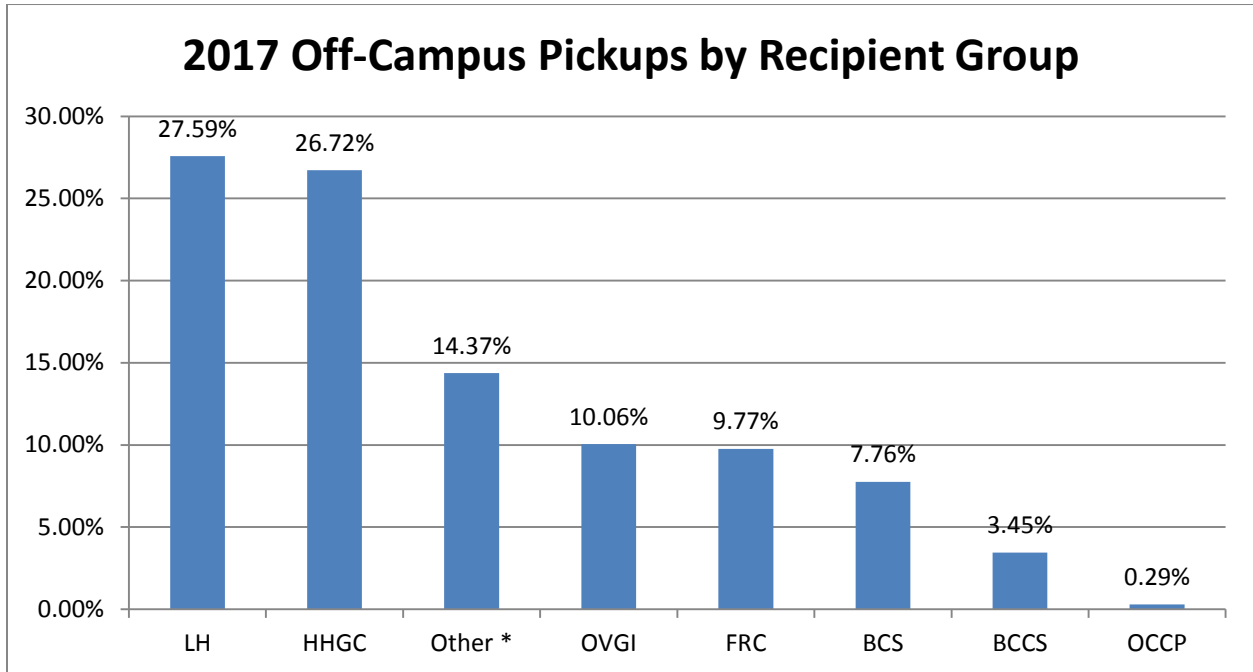


Figure 3: 2017 Off-Campus Pickups by Recipient Group

* The "Other" category includes volunteer crews who signed up with no specific recipient group. The on-site coordinators distributed donations picked up by these volunteers to recipient groups based on lists of needs, mainly to BCCS, BCS, and OVGI.

Abbreviation	Organization
LH	Lighthouse Food Pantry
HHGC	Habitat for Humanity of Greater Cincinnati
OVGI	Ohio Valley Goodwill Industries
FRC	The Family Resource Center
BCS	Butler County and Preble County Success
BCCS	Butler County Children Services
OCCP	Oxford Community Choice Pantry

Weight Estimate

Using figures provided by movers.com , sterilite.com, ikea.com, and the Oxford Community Choice Pantry, we estimate ShareFest 2017 collected approximately 173,230 pounds, or 87 tons, of donations. This number is up from 77 tons collected in 2016, an increase of 12%.

Items Collected

Table 1 compares 2016 donations with items collected in 2017.

Table 1: 2016 vs 2017 Donation Comparison

Item	2016	2017	Change
Clothing & Shoes (boxes or bags)	719	741	+3%
Food (boxes or bags)	218	279	+28%
Cleaning Supplies (boxes or bags)	39	52	+33%
Broom/Mop	33	41	+24%
Unused Toiletries (boxes or bags)	11	23	+109%
School Supplies (boxes or bags)	93	24	-74%
Kitchenware (boxes or bags)	192	200	+4%
Curtains (boxes or bags)	16	20	+25%
Microwave Oven	106	87	-18%
Toaster/Toaster Oven	6	12	+100%
Slow Cooker	12	6	-50%
Coffee Maker	36	33	-8%
Dining Room Table/Chair Set	30	20	-33%
Sofa/Couch	81	84	+4%
Loveseat	19	35	+84%
Chair	166	156	-6%
Recliner	11	13	+18%
Coffee Table	34	36	+6%
End Table	51	54	+6%
Bookcase	76	96	+26%
TV Stand/Entertainment Center	26	23	-12%
Desk	63	63	0%
Desk Chair	41	52	+27%
Floor Lamp	101	86	-15%
Desk/Table Lamp	111	175	+58%
Mattress	67	55	-18%
Box Springs	56	39	-30%
Bed Frame	55	49	-11%
Headboard	20	18	-10%
Comforter/blanket (boxes or bags)	104	208	+100%
Towels (boxes or bags)	23	39	+70%

Item	2016	2017	Change
Sheets (boxes or bags)	58	109	+88%
Dresser	54	85	+57%
Chest of Drawers	22	16	-27%
Nightstand	22	35	+59%
Television	11	8	-27%
Laptop Computer	1	1	0%
Refrigerator, large	4	0	-100%
Refrigerator, small	19	6	-68%
Washer	0	3	-
Dryer	1	3	+200%
Fan	91	77	-15%
Carpet or Rug	91	133	+46%
Mirror	190	201	+6%
Printer	21	13	-38%
Holiday Decorations (boxes or bags)	16	6	-63%
Trash Can	15	27	+80%
Air Conditioner	4	3	-25%
Bicycle	5	4	-20%
Futon	9	22	+144%
Ironing Board	19	31	+63%
Vacuum/Electric Broom	26	47	+81%
Storage Container	161	165	+2%
Iron/Steamer	5	6	+20%
Ottoman	26	56	+115%
Lawn Chair	12	3	-75%
Books (boxes or bags)	47	68	+45%
Clothes Drying Rack	8	7	-13%
Printer Paper/Notebooks (boxes or bags)	21	32	+52%
Artwork (boxes or bags)	18	17	-6%
Miscellaneous Decorations (boxes or bags)	19	35	+84%
Drawer Unit (three or more)	73	104	+42%
Bed Riser (set of four)	37	37	0%
Random Appliances	30	19	-37%
Miscellaneous Plasticware	1	34	+3300%
Speakers/Stereo Equipment	3	9	+200%
Suitcase		9	-
Crutches (set of two)		7	-
Skateboard		6	-

Impact

The ShareFest Board required recipient agencies to provide impact statements after ShareFest 2017, which should include the following items:

- The impact statement will provide real or estimated numbers of persons that will benefit from ShareFest donations, the number of volunteers, and total number of volunteer hours.
- A recipient group that sells ShareFest donations will report the real or estimated dollar amount of sales and the intended use of funds in the impact statement.

Butler County and Preble County Success

BCS provided 16 volunteers for a total of 139 hours. ShareFest 2017 benefited at least 33 families in need throughout Butler and Preble Counties.

BCS gave most of the items, particularly furniture, to families with immediate needs. It will keep hygiene items, silverware, dishes, and bedding on hand for when families need them.

Chrissy Rolfes, Talawanda Success Liaison and ShareFest 2017 Planning Committee Member, provided the following impact example:

“Because of ShareFest, I was able to assist two families who essentially were starting over. Each family received beds and other furniture items in addition to household items. Three additional families received needed items. All families were very grateful. The one that stands out though, is the 6 year old who had been sleeping on the floor. When the bed frame and mattress were brought into his home, I told him that it was for him. He was beaming. Then, I gave him a comforter/sheet set. He said, ‘Is this for me?’ I said yes. He said, ‘I am so happy.’ He thanked me several times before I left.”

Ohio Valley Goodwill Industries, Furniture Fair, and Duke Energy assisted BCS with storage space and volunteers.

Butler County Children Services

BCCS already assisted at least three families with ShareFest 2017 donations. Thirteen volunteers worked 92 hours to collect donations.

Ohio Valley Goodwill Industries, Duke Energy, and Furniture Fair assisted BCCS with storage space and volunteers.



The Family Resource Center

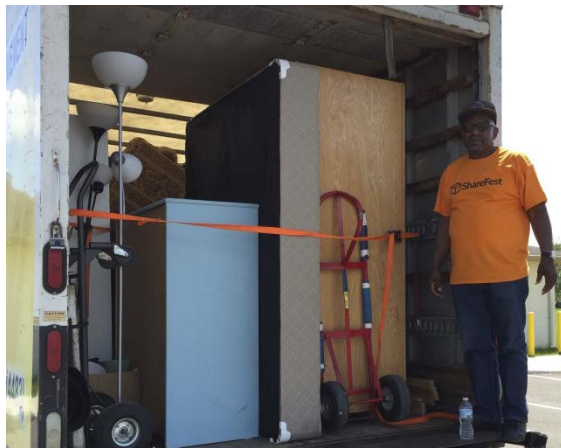
Twenty-one volunteers worked 138 hours to benefit The Family Resource Center in Oxford. The FRC sold its donations at sales in May and August that netted \$1,952.00. The FRC uses proceeds from the sales to provide services to low-income and homeless individuals in the Talawanda School District.



Volunteers from Furniture Fair, Anytime Fitness Oxford, and Duke Energy volunteered to pick up ShareFest donations for the FRC.

Habitat for Humanity of Greater Cincinnati

The proceeds generated from the sale of ShareFest 2017 donations at Habitat for Humanity of Greater Cincinnati ReStores will help low-income families in Oxford and in the Greater Cincinnati area to acquire decent affordable housing and to build homes.



Twenty employees and volunteers worked approximately 120 hours during ShareFest 2017. Habitat for Humanity ReStores collected 25 truckloads of donations with an estimated retail value of nearly \$13,000.00. This amount represents roughly 12% of the average cost of building a home for one Habitat host family. In addition, dozens more families will benefit by taking advantage of the opportunity to purchase needed household items at significantly less than new retail prices and allowing them to use precious financial resources for other budget items such as housing, food, and clothing.

Lighthouse Food Pantry

ShareFest 2017 donations resulted in \$15,000.00 of revenue for Lighthouse Food Pantry. Lighthouse is currently serving about 1,000 people and the money collected from the sale of donations will be used to buy food.

Lighthouse provided 35 volunteers, collectively working 653 hours, to pick up and transport ShareFest 2017 donations. Volunteers from Duke Energy also assisted Lighthouse in its collection efforts.



Ohio Valley Goodwill Industries



ShareFest 2017 donations resulted in 45,000 pounds of resources and \$17,550.00 in revenue for Ohio Valley Goodwill Industries, which will support its on-going mission of putting people with disabilities and our nation's veterans to work in the Greater Cincinnati community.

Ohio Valley Goodwill provided two employees to staff the ShareFest 2017 dispatch and swapping site throughout the event and two employees and a truck to pick up donations from off-campus locations.

Oxford Community Choice Pantry

The OCCP received 3,401 pounds of *usable* food donated to ShareFest 2017. While our records for food collection show an increase of 28% in 2017, the OCCP volunteers removed expired or unusable food before weighing it this year. Because of this change in methodology, food weight declined from 3,905 in 2016, a decrease of 15%.

Ten pantry volunteers donated a total of 50 hours of their time to sort the donated food at Chestnut Fields and used their own vans and trucks to transport the items to the Pantry where it will be distributed to clients.



Financial

The following information is accurate as of Monday, July 31, 2017.

Cash Flow

Cash flow carried over from previous year 6/30/16 \$6,139.23

Income

Grant from Miami University 2017	\$1,500.00	
Faith Lutheran Church	\$1,000.00	
Oxford United Methodist Church	\$500.00	
Oxford Community Foundation	\$1,000.00	
Oxford Presbyterian Church	\$400.00	
Holy Trinity Episcopal Church	\$300.00	
Bath State Bank	\$25.00	
Sale of Textbooks Collected	<u>\$280.10</u>	
		\$5,005.10

Expenses

Unique Screen Design	\$1,220.00	
Sam's Club (Two Canopy Tents)	\$192.56	
Costco Club (Anchor Systems)	\$136.30	
Penske Truck Rental	\$453.60	
Bethart Printing (Door hangers)	\$153.38	
Cors Bassett for Trademark Security	\$65.00	
NameCheap (Domain Renewal)	\$52.35	
Reimbursement to KB for damaged tents (2)	\$100.00	
Reimbursement to CM for Food, Copies, Paper Supplies	\$78.02	
US Bank Bank Charges	<u>\$60.00</u>	
		<u>\$2,511.21</u>

Less

Miami University Invoice Currently Outstanding \$1,500.00

Reserves

Reserves on Hand \$7,133.12

Thank You!

On-Campus and Off-Campus Donors

Thank you to all of our donors from the Miami University and greater Oxford community! Your donations help people in need throughout the region.

Caroline Ward

Thank you Miami University graduating senior Caroline Ward. Caroline had leftover money on her dining account, so she purchased approximately \$417.00 worth of unopened food from an on-campus store. Caroline donated the 20 bags of food to the Oxford Community Choice Pantry via ShareFest 2017.



Volunteers

Thank you to all of the volunteers! Many worked multiple days to drive trucks and vans, pick up, and organize donations. Volunteers came from the Oxford community and all parts of the region, including service and religious groups, Miami University, businesses, ShareFest planning committee, and recipient groups.

The following groups provided volunteers to collect ShareFest 2017 donations.

- Anytime Fitness Oxford
- Bunker Hill Haven for Boys
- Duke Energy
- Furniture Fair
- Oxford United Methodist Church
- Talawanda Football Team
- Talawanda Lacrosse Team
- Whistle Stop

Alice Laatsch

Thank you Oxford resident and United Methodist Church member Alice Laatsch. Alice volunteered every day of ShareFest 2017 as the first official Site Coordinator. Alice helped organize the collection site and pick up donations.



Miami University

Thank you to Miami University for donating Chestnut Fields for use as the ShareFest 2017 dispatch, collection, and swapping site, and for allowing volunteers to access to the restrooms. The ShareFest 2017 Planning Committee thanks the following individuals for their commitment to the event:

- Rob Abowitz, Office of Residence Life
- Jen O'Brien, Off-Campus Outreach
- Ben Spilman, Police/Parking
- Billy Fitzgerald, Associated Student Government
- Sean Perme, Associated Student Government
- Mike Arnos, Recreation Center
- Dr. Denise Taliaferro Baszile, College of Education, Health and Society

The people above either served on the ShareFest 2017 Planning Committee or assisted in marketing and outreach, provided funding for volunteer t-shirts, or coordinated the Chestnut Fields site.

Ohio Valley Goodwill Industries

Thank you to Ohio Valley Goodwill Industries for donating storage trailers for recipient group usage, and for providing staff to manage and organize the site.

Companies and Organizations

Thank you to the following organizations and offices that provided financial support, staff to help with planning, volunteers, food, and other assistance.

Table 2: ShareFest 2017 Sponsors

Organization	Contribution
Anytime Fitness (Oxford)	Volunteers
Baker & Associates CPAs LLC	Board, volunteers, materials
Bath State Bank	Monetary donation
Bunker Hill Haven for Boys	Volunteers
Butler County Children Services	Planning committee, recipient group, volunteers
Butler County and Preble County Success/Talawanda	Planning committee, recipient group, volunteers
Chipotle Mexican Grill (Oxford)	Food for volunteers
City of Oxford	Board, planning committee, volunteers, materials
Duke Energy	Volunteers
Faith Lutheran Church & Campus Ministry	Monetary donation
The Family Resource Center	Planning committee, recipient group
Furniture Fair	Volunteers
Habitat for Humanity of Greater Cincinnati ReStores	Planning committee, recipient group, volunteers
Holy Trinity Episcopal Church	Monetary donation
Jimmy John's Gourmet Sandwiches (Oxford)	Food for volunteers
LaRosa's Pizzeria (Oxford)	Food for volunteers
The Lighthouse Food Pantry	Planning committee, recipient group, food for volunteers
Miami University Associated Student Government	Marketing
Miami University College of Education, Health and Society Partnership Office	Board, \$1,500.00 for volunteer t-shirts
Miami University Office of Community Engagement and Service	Planning committee
Miami University Office of Residence Life	Planning committee, volunteers
Miami University Police Department	Planning committee, Chestnut Fields parking lot for dispatch/swapping site
Miami University Recreation Center	Chestnut Field House restrooms and electric
Miami University Student Affairs (Off-Campus Outreach & Communication)	Planning committee, materials
Ohio Valley Goodwill Industries	Planning committee, recipient group, recipient group storage during event, volunteers

Organization	Contribution
Oxford Community Choice Pantry	Planning committee, recipient group, volunteers
Oxford Community Foundation	Grant
Oxford Lane Library	Meeting space, technology assistance
Oxford Presbyterian Church	Monetary donation
Oxford United Methodist Church	Monetary donation, volunteers
SDS Pizza	Food for volunteers
Skyline Chili (Oxford)	Food for volunteers
Subway (Uptown Oxford)	Food for volunteers
Talawanda School District	Board, volunteers
Whistle Stop	Volunteers



Community

Thank you to everyone who participated in ShareFest 2017. Recognize that your contribution to this event helps individuals in need, teaches sharing and environmental ethics and awareness of diverse backgrounds, protects the environment, and helps keep Oxford clean. **Thank you!**

ShareFest 2018

Wednesday, May 16 through Tuesday, May 22, 2018
