

ShareFest 2018

Final Report

November 12, 2018



Table of Contents

Introduction	1
About ShareFest.....	1
People	3
Recipient Groups.....	4
Marketing.....	6
Dispatch and Donation Collection and Swapping Site	8
Donation Process	8
Donation Results	10
Impact	13
Financial Statement	15
Thank You!.....	16



Introduction

ShareFest 2018 marked the 14th year for the annual donation drive that occurs in Oxford during Miami University Move-Out Week. Donations increased 12% from 2017. Volunteers and sponsors from Miami University, nonprofit agencies, religious organizations, businesses, the Oxford community, and more continue to sustain this event.

About ShareFest

Mission Statement

ShareFest is a service and environmental nonprofit corporation dedicated to the collection and redistribution of items donated by Miami University students and the Oxford community at the end of the academic year. Collected items benefit residents in need and social service agencies throughout the region.

Purpose

The purpose of ShareFest is to:

1. Help individuals in need by providing them with access to furniture, household goods, clothing and food that are donated by Miami University students or by other community members at the end of the academic year.
2. Teach sharing and environmental ethics and an awareness of diverse backgrounds to the young people who are students at Miami University.
3. Protect and preserve the environment by preventing usable items from going into the landfill.
4. Help the City of Oxford dispose of unwanted items and help clean the City quickly.

History

ShareFest has experienced tremendous growth since beginning in 2005. That year, ShareFest served 65 families, followed by 270 in 2006, over 300 in 2007 and 2008. In 2009, ShareFest served over 600 families by nine recipient groups. Families were able to furnish homes with items such as couches, dressers, desks and kitchen tables. In addition, many teenagers received high-quality clothing items.

In 2010, the ShareFest Committee began allowing groups to sell the collected items. It was a condition that proceeds would benefit their clients.

In September 2013, ShareFest was established as an official nonprofit corporation with the State of Ohio. The nonprofit corporation was set up to manage event finances and donation collection. The ShareFest nonprofit corporation is separate from groups that receive donations during the move out week drive.

In summer 2014, ShareFest received its 501(c)(3) tax exemption status with the Internal Revenue Service (IRS), effective September 9, 2013. ShareFest continues to support the nonprofit partners and agencies that participated in previous years.

The following six recipient groups participated in ShareFest 2018 and received donations:

- Butler County/Preble County Success
- The Family Resource Center
- Habitat for Humanity of Greater Cincinnati
- Lighthouse Food Pantry
- Ohio Valley Goodwill Industries
- Oxford Community Choice Pantry



People

Board

- **President Dr. Carol Michael**, Miami University Emeritus and Oxford Resident
- **Vice-President Holli Morrish**, Talawanda School District
- **Treasurer Karen Baker**, Baker & Associates CPAS LLC
- **Jung-Han Chen**, City of Oxford Community Development Department

Planning Committee

The following people dedicated countless hours attending meetings to plan and coordinate ShareFest 2018.

- **Planning Committee Chair Jung-Han Chen**, City of Oxford Community Development Department
- **Rob Abowitz**, Miami University Office of Residence Life
- **Pam Bass**, Habitat for Humanity of Greater Cincinnati
- **Sharon Hannon**, Ohio Valley Goodwill Industries
- **Joann Knott**, Lighthouse Church and Pantry
- **Dr. Carol Michael**, Miami University Emeritus and Oxford Resident
- **Ashley Miller**, Lighthouse Church and Pantry
- **Ray Mock**, Oxford Community Choice Pantry
- **Mike Moore**, Habitat for Humanity of Greater Cincinnati
- **Jen O'Brien**, Miami University Off-Campus Outreach
- **Heidi Punghorst**, Ohio Valley Goodwill Industries
- **Chrissy Rolfes**, Butler County and Preble County Success Program/Talawanda and The Family Resource Center
- **Dr. Edna Southard**, Oxford Community Choice Pantry
- **Ben Spilman**, Miami University Police/Parking
- **Missy Thompson**, The Family Resource Center
- **Andrew Wilson**, City of Oxford Community Development Department



Recipient Groups

The number of groups receiving ShareFest donations varies from year to year. In 2018, the following six agencies and organizations received ShareFest donations.

Butler County and Preble County Success

The Butler County Educational Service Center's Success Program removes non-cognitive barriers to learning by building bridges between home, school and community to improve school success and self-reliance. Butler County Success works with families that are at 200% of the poverty guideline or lower in nine nearby school districts, and is currently serving approximately 2,000 students.

Butler County and Preble County Success give their ShareFest donations to families free of charge.

The Family Resource Center

The FRC serves the Talawanda School District and provides emergency assistance with basic needs such as shelter, energy, water, and clothing. The FRC also coordinates services with community partners to enhance the ability of individuals to become more self-sufficient through education, employment, and money management.

Between 2005 and 2009, dozens of families received free furnishings and housewares because of the FRC's participation in the event. Since 2010, the FRC sells its ShareFest donations in order to maintain the funding for its services to the community.



Habitat for Humanity of Greater Cincinnati

HFHGC is part of a global, nonprofit housing organization operated on Christian principles that seeks to put God's love into action by building homes, communities and hope. HFHGC is dedicated to eliminating substandard housing locally and worldwide through constructing, rehabilitating and preserving homes, by advocating for fair and just housing policies, and by providing training and access to resources to help families improve their shelter conditions. In the Oxford area, HFHGC has helped 16 families and has two active neighborhoods, Reckford Woods and Reaghs Way.

Habitat for Humanity sells its ShareFest donations at the Habitat for Humanity ReStores. The proceeds will be used to help fund its mission to eliminate substandard housing in Oxford and beyond.



Lighthouse Food Pantry

The Lighthouse Food Pantry serves 400-500 families each month and is based in Hamilton, Ohio. Since 2010, the Lighthouse sells its ShareFest donations in order to maintain the funding needed for its services to the community.

Ohio Valley Goodwill Industries



Ohio Valley Goodwill Industries strives in an ever-improving mode to be the leader in quality and effectiveness of vocational, educational, social and human services in the State of Ohio. As a member of Goodwill Industries International, Ohio Valley Goodwill Industries is a part of the world's largest and most successful network providing employment and training services for people with disabilities, our nation's veterans, and others with barriers to employment. Annually, Goodwill assists more than 3,400 people, and in 2017, it helped almost 1,000 people get jobs in the communities it serves.

Ohio Valley Goodwill Industries sells its donations at the Oxford Goodwill Store to help individuals with disabilities and veterans to receive employment and training services and get jobs in the community.

Oxford Community Choice Pantry

The mission of the OCCP is to alleviate hunger and provide nutrition information to the families and individuals in need who live in the Talawanda School District. The OCCP serves approximately 300 families in the Talawanda School District and honors the dignity of shoppers by allowing them to choose their items according to their household size and the federally recommended nutritional requirements. The OCCP also provides customers with nutritional information.



The OCCP will provide its ShareFest donations to shoppers free of charge.

Marketing

The ShareFest 2018 Planning Committee marketed the event in the various ways listed below.

1. Emails to off-campus students from outgoing Secretary for Off-Campus Affairs Sean Perme and incoming Secretary Charles Kennick
2. Emails to on-campus students
3. Email to Chestnut Fields permit holders from Miami University Parking Services
4. Facebook: ShareFest Page and ShareFest 2018 Event
5. Miami University Student Affairs Facebook Page and Twitter
6. Miami University Parents Office Email Newsletter
7. Religious organizations
8. City of Oxford website
9. City of Oxford utility bills
10. Ohio Valley Goodwill Industries website, social media, and promotional video
11. Cincinnati.com postings by Ohio Valley Goodwill Industries
12. Face-to-face conversations
13. Greek Spring Clean door hangers
14. Information from Property Managers
15. Signs in residence hall corridors and drop-off locations
16. Residence hall move out checklists
17. Signs at Chestnut Fields



ShareFest 2018 - Oxford, OH
Wednesday, May 16 through Tuesday, May 22

MOVING OUT?

Donate!

Furniture	Housewares
Nonperishable food	Clothing
Appliances	Kitchenware

Complete list on website

Drop Off or Schedule A Pick Up

Volunteers can pick up from your residence. Schedule **early!** Time slots fill up quickly.

Charitable contribution forms are available.

Donated items are distributed to social service agencies and residents in need. Groups may sell items at reduced costs, but all proceeds must benefit the agency.

sharefestoxford.com



MOVE OUT WEEK!
Donate reusable housewares, furniture,
clothes, and nonperishable food »

The donation pickup request form asked donors how they heard about ShareFest 2018. Figure 1 displays the marketing responses in descending order.

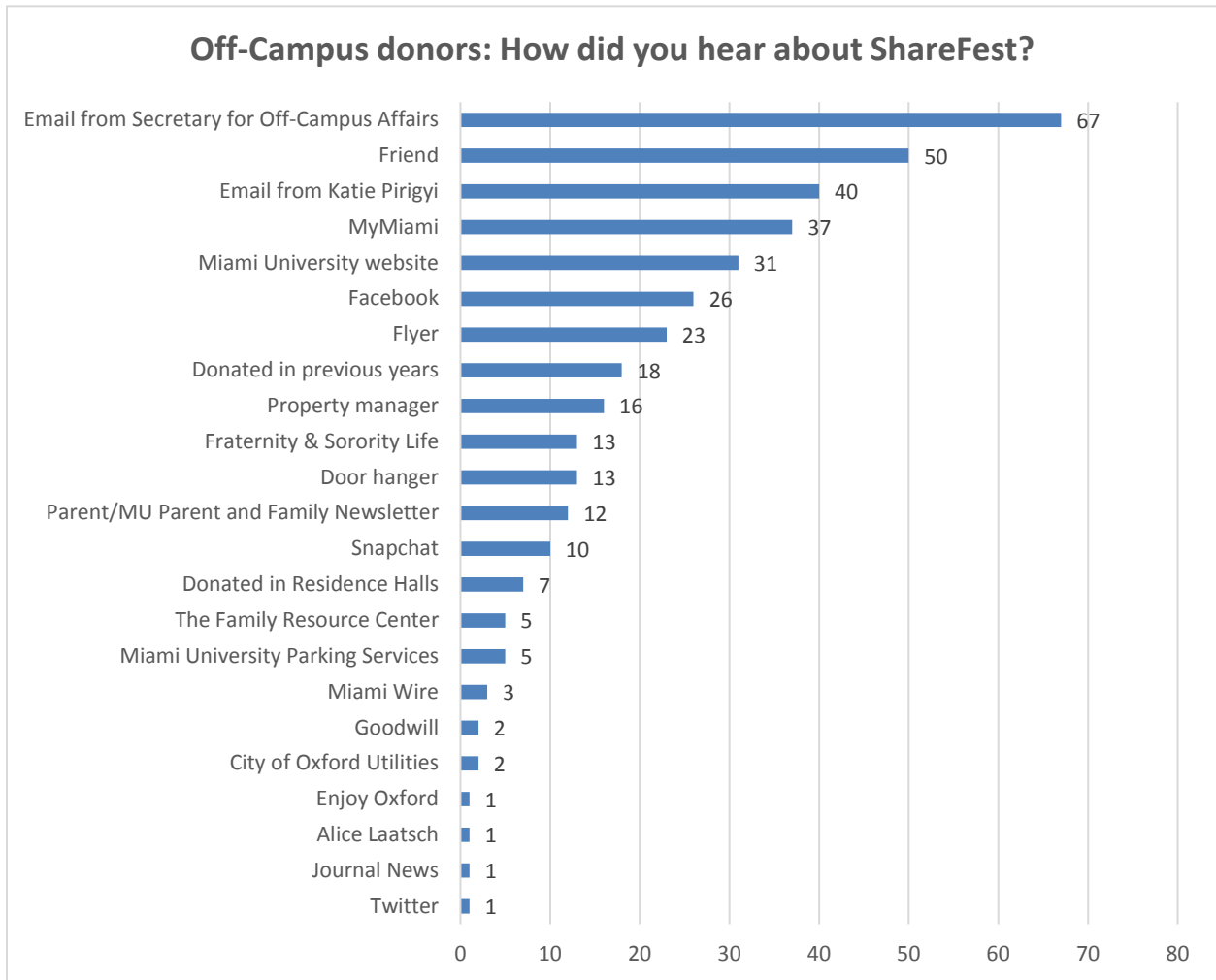


Figure 1 How did you hear about ShareFest 2018?

Electronic communication methods are the main ways that students hear about ShareFest. Combined, emails from outgoing Secretary of Off-Campus Affairs Sean Perme and incoming Secretary Charles Kennick, pictured at right, generated 67 responses. Fifty donors heard about the event from friends, while 40 people noted that they received an email from Katie Pirigy. New for 2018, the Secretaries for Off-Campus Affairs, listed above, took over the Miami University Snapchat account and visited residence halls, off-campus houses, and the ShareFest central site.



Dispatch and Donation Collection and Swapping Site

Miami University allowed ShareFest 2018 recipient groups and organizers to use the Chestnut Fields Parking Lot, located at 101 West Chestnut Street for dispatch, donation collection, and swapping. Chestnut Fields is the former site of Talawanda High School.

The site was perfect for access to on- and off-campus locations and it offered abundant parking for volunteers. Volunteer check-in and dispatchers were set up next to the Chestnut Field House. Ohio Valley Goodwill provided four trailers, two of which it donated for use by other recipient groups. Miami University also allowed ShareFest volunteers to use the Chestnut Field House restrooms.

Recipient groups provided lists of needed items. The dispatcher used the lists to assign pickups and the on-site volunteers used the lists to direct donations as they arrived for swapping and drop-off.

The dispatcher communicated with donors, volunteers, recipient groups, and the public through social media, email, text messaging, and phone.



Donation Process

Off-Campus

Off-campus Miami University students and Oxford residents donated sofas, beds, dining room table sets, appliances, housewares, clothing, food, and much more. Donors scheduled donation pickups on the ShareFest website. The online form contains fields for entering:

- donor name
- address/special entry instructions/house name
- phone number and email address
- types and quantities of donations
- tax deduction form yes/no
- how the donor heard about ShareFest

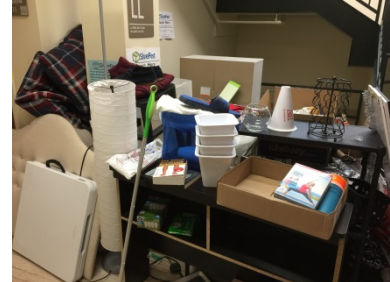
Due to Uptown traffic and access issues, ShareFest does not allow donors living on High Street to schedule pickups between 11:00 AM and 1:00 PM.



ShareFest allowed donors to schedule same-day pickups by calling Dispatch or filling out the form online. Typically, donors schedule at least one day in advance. The ShareFest website stated there was no guarantee of same-day availability. However, ShareFest did not have to turn away any same-day requests.

On-Campus

Forty-three Miami University residence halls participated in ShareFest 2018. Three residence halls did not participate due to closure for renovation during the 2017-18 academic year. On-campus students donated items at designated locations within each residence hall. On-campus students continued to donate large quantities of food, clothing, small appliances, and housewares. The on-campus collection sites were well-organized, allowing volunteers to pick up donations quickly.



In addition to the on-campus collection sites, fourteen sorority suites, also located within Miami University residence halls, closed for renovation. All sorority suites donated great amounts of furniture, appliances, housewares, and clothing.

Donation Drop-Offs

At least 85 donors dropped off donations to the ShareFest 2018 dispatch and collection site. Several donors made multiple trips to the drop-off site. This number compares to 75 donors who dropped off donations in 2017, or an increase of 13%.

Donation Tracking

The ShareFest 2018 Planning Committee improved donation tracking by creating four distinct inventory sheets for on-campus donations, off-campus donations, donation drop-offs, and same day, off-campus pickup requests. The four inventory sheets were similar but collected different data. Volunteers inventoried items as they collected them from off-campus residences or residence halls, or at the time of donation drop-off.

Same Day Pickup		Request Date	CMR1	CMR2	CMR3	CMR4
INVENTORY THIS DONATION ON BACK -->						
Date & Time Requested	May _____, 2017 _____					
Name	_____					
Address	_____					
House Number/Apartment	_____					
Phone	_____					
Email Address	_____					
Are donations items?	Yes No					
How did you hear about us?	_____					
Items Being Donated	_____					
<small> Dispatch Center: Andrew - (513) 314-4130 Michelle - (513) 314-4130 Butler County Health Dept: (513) 833-1770 </small>						

Donation Results

For ShareFest 2018, 328 off-campus donors scheduled pickups online. This represents a 10% increase from 297 requests in 2017. In 2018, 12 donors canceled pickups, 14 donors were not home, and volunteers turned away two junk donations. After we removed cancellations and junk pickup requests, the remaining 300 requests represent an increase of 4% from 2017 and set a new record for ShareFest.

Figure 2 displays the year-by-year adjusted pickup requests from 2008 through 2018.

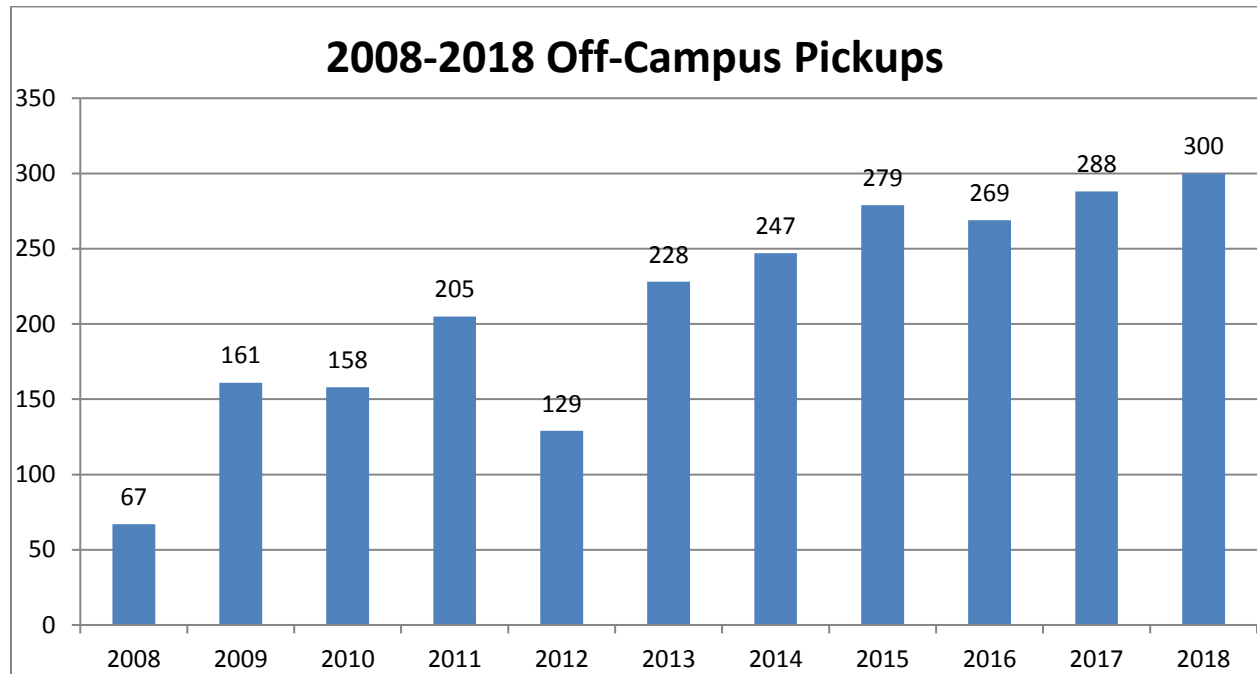


Figure 2 Off-Campus Pickups by Year

Weight Estimate

Using figures provided by movers.com , sterilite.com, ikea.com, amazon.com, and the Oxford Community Choice Pantry, we estimate ShareFest 2018 collected approximately 194,007 pounds, or 97 tons, of donations. This number is up from 87 tons collected in 2017, an increase of 12%.

Items Collected

Table 1 compares 2017 donations with items collected in 2018.

Table 1 2017 to 2018 donation quantity comparison

Item	2017	2018	Change
Clothing & Shoes	741	702	-5%
Food	279	247	-11%
Cleaning Supplies	52	50	-4%
Broom/Mop	41	24	-41%
Unused Toiletries	23	37	+61%
School Supplies	56	161	+188%
Kitchenware	200	247	+24%
Curtains	20	32	+60%
Microwave Oven	87	110	+26%
Toaster/Toaster Oven	12	36	+200%
Slow Cooker	6	19	+217%
Coffee Maker	33	62	+88%
Dining Room Table ¹		44	
Dining Room Chairs ¹		102	
Sofa/Couch	84	91	+8%
Loveseat	35	24	-31%
Chair	156	126	-19%
Recliner	13	12	-8%
Coffee Table	36	39	+8%
End Table	54	50	-7%
Bookcase	96	137	+43%
TV Stand/Entertainment Center	23	28	+22%
Desk	63	60	-5%
Desk Chair	52	61	+17%
Floor Lamp	86	86	0%
Desk/Table Lamp	175	158	-10%
Mattress	55	65	+18%
Box Springs	39	48	+23%
Bed Frame	49	54	+10%
Headboard	18	20	+11%

¹ Inventoried differently from previous years

Item	2017	2018	Change
Comforter/blanket	208	163	-22%
Towels	39	76	+95%
Sheets	109	88	-19%
Dresser	85	79	-7%
Chest of Drawers	16	14	-13%
Nightstand	35	45	+29%
Television	8	11	+38%
Laptop Computer	1	6	+500%
Refrigerator, large	0	17	
Refrigerator, small	6	10	+67%
Washer	3	3	0%
Dryer	3	2	-33%
Fan	77	82	+6%
Carpet or Rug	133	157	+18%
Mirror	201	249	+24%
Printer	13	10	-23%
Holiday Decorations	6	13	+117%
Trash Can	27	29	+7%
Air Conditioner	3	1	-67%
Bicycle	4	0	-100%
Futon	22	38	+73%
Ironing Board	31	30	-3%
Vacuum/Electric Broom	47	29	-38%
Storage Container	165	179	+8%
Iron/Steamer	6	27	+350%
Ottoman	56	40	-29%
Lawn Chair	3	25	+733%
Books	68	75	+10%
Clothes Drying Rack	7	7	0%
Artwork	17	26	+53%
Misc. Decorations	35	65	+86%
Drawer Unit (three or more)	104	152	+46%
Bed Riser (set of four)	37	40	+8%
Random Appliances	19	16	-16%
Speakers/Stereo Equipment	9	8	-11%
Suitcase	9	11	+22%
Crutches	7	12	+71%

Impact

The ShareFest Board required recipient agencies to provide impact statements after ShareFest 2018, which should include the following items:

- The impact statement will provide real or estimated numbers of persons that will benefit from ShareFest donations, the number of volunteers, and total number of volunteer hours.
- A recipient group that sells ShareFest donations will report the real or estimated dollar amount of sales and the intended use of funds in the impact statement.

Butler County and Preble County Success

BCS provided 13 volunteers for a total of 102 hours. ShareFest 2018 benefited at least 40 families in need throughout Butler and Preble Counties, including 7 families in the Talawanda School District.

BCS gave most of the items, particularly furniture, to families with immediate needs. It will keep hygiene items, silverware, dishes, and bedding on hand for when families need them.

Chrissy Rolfes, Talawanda Success Liaison and ShareFest 2018 Planning Committee Member, provided the following impact example, regarding a family from the Talawanda School District:

“I was able to help provide a kitchen table, chairs and couch to a family that was previously homeless and starting over in a new apartment. This was a huge help as it allowed them to keep the money they had saved to pay their rent, utilities, and grocery bills.”

Ohio Valley Goodwill Industries, Furniture Fair, and Duke Energy assisted BCS with storage space and volunteers.

The Family Resource Center

Nineteen volunteers worked 109 hours to benefit The Family Resource Center in Oxford. The FRC sold its donations at sales in May and August that brought in approximately \$2,500. The Family Resource Center uses proceeds from the sales to provide services to low-income and homeless individuals in the Talawanda School District.

Volunteers from Duke Energy helped pick up ShareFest donations for the Family Resource Center.



Habitat for Humanity of Greater Cincinnati

The proceeds generated from the sale of ShareFest 2018 donations at Habitat for Humanity of Greater Cincinnati ReStores will help low-income families in Oxford and in the Greater Cincinnati area to acquire decent affordable housing and to build homes.

Twenty employees and volunteers worked approximately 240 hours during ShareFest 2018. Habitat for Humanity ReStores collected 20 truckloads of donations with an estimated retail value of between \$15,000 and \$20,000. This amount represents roughly 10% to 15% of the average cost of building a home for one Habitat host family. In addition, dozens more families will benefit by taking advantage of the opportunity to purchase needed household items at significantly less than new retail prices and allowing them to use precious financial resources for other budget items such as housing, food, and clothing.



Lighthouse Food Pantry

ShareFest 2018 donations resulted in \$15,000 of revenue for Lighthouse Food Pantry. Lighthouse is currently serving about 1,000 people and the money collected from the sale of donations will be used to buy food.

Lighthouse provided 18 volunteers, collectively working 380 hours, to pick up and transport ShareFest 2018 donations.



Ohio Valley Goodwill Industries



ShareFest 2018 donations resulted in 79,305 pounds of resources and \$35,100 in revenue for Ohio Valley Goodwill Industries, which will support its on-going mission of putting people with disabilities and our nation's veterans to work in the Greater Cincinnati community.

Ohio Valley Goodwill provided two employees to staff the ShareFest 2018 dispatch and swapping site throughout the event and two employees and a truck to pick up donations from off-campus locations.

Oxford Community Choice Pantry

The OCCP received 3,908 pounds of food donated to ShareFest 2018. Volunteers used their own vans and trucks to transport the items to the Pantry where it distributed the donations to clients.

Financial Statement

The following information is accurate as of Sunday, September 30, 2018.

Cash Flow

Cash flow carried over from previous year 7/31/2017 \$7,133.12

Income

Faith Lutheran Church	\$500.00	
Oxford United Methodist Church	\$500.00	
Oxford Community Foundation	\$0.00	
Oxford Presbyterian Church	\$0.00	
Holy Trinity Church	\$0.00	
Sale of Textbooks Collected	<u>\$55.00</u>	
		\$1,055.00

Expense

Lebowski Tees	\$1,199.00	
Penske Truck Rental	\$512.50	
Bethart Printing (door hangers)	\$153.38	
Conference Cost for A. Wilson, R. Abowitz	\$158.06	
Robinson & Jones – Secretary of State Filing Fees	\$25.00	
Reimbursement to A. Wilson for Copies, Supplies, Brunos	\$622.29	
Reimbursement to CM for Food, Copies, Paper Supplies	\$179.72	
US Bank Bank Charges (\$5/per month)	<u>\$70.00</u>	
		<u>\$2,919.95</u>

Reserves

Reserves on Hand 9/30/2018 \$5,268.17

Thank You!

On-Campus and Off-Campus Donors

Thank you to all of our donors from the Miami University and greater Oxford community! Your donations help people in need throughout the region.

Volunteers

Thank you to all of the volunteers! Many worked multiple days to drive trucks and vans, pick up, and organize donations. Volunteers came from the Oxford community and all parts of the region, including service and religious groups, Miami University, businesses, ShareFest planning committee, and recipient groups.

The following groups provided volunteers to collect ShareFest 2018 donations.

- Duke Energy
- Furniture Fair
- Oxford United Methodist Church
- Talawanda Football Team
- Talawanda Lacrosse Team

Alice Laatsch

Thank you Oxford resident and United Methodist Church member Alice Laatsch. Alice volunteered every day of ShareFest 2018 as the Site Coordinator. Alice helped organize the collection site and pick up donations.



Miami University

Thank you to Miami University for donating Chestnut Fields for use as the ShareFest 2018 dispatch, collection, and swapping site, and for allowing volunteers to access to the restrooms. The ShareFest 2018 Planning Committee thanks the following individuals for their commitment to the event:

- Rob Abowitz, Office of Residence Life
- Jen O'Brien, Off-Campus Outreach
- Ben Spilman, Police/Parking
- Sean Perme, Associated Student Government
- Charles Kennick, Associated Student Government
- Mike Arnos, Recreation Center

The people above either served on the ShareFest 2018 Planning Committee or assisted in marketing and outreach, provided funding for volunteer t-shirts, or coordinated the Chestnut Fields site.

Ohio Valley Goodwill Industries

Thank you to Ohio Valley Goodwill Industries for donating four storage trailers for recipient group usage, and for providing staff to manage and organize the site.

Companies and Organizations

Thank you to the following organizations and offices that provided financial support, staff to help with planning, volunteers, food, and other assistance.

Table 2: ShareFest 2018 Sponsors

Organization	Contribution
Baker & Associates CPAs LLC	Board, volunteers, materials
Butler County and Preble County Success/Talawanda	Planning committee, recipient group, volunteers
City of Oxford	Board, planning committee, volunteers, materials
Duke Energy	Volunteers
Faith Lutheran Church & Campus Ministry	Monetary donation
The Family Resource Center	Planning committee, recipient group
Furniture Fair	Volunteers
Habitat for Humanity of Greater Cincinnati ReStores	Planning committee, recipient group, volunteers
LaRosa's Pizzeria (Oxford)	Food for volunteers
The Lighthouse Food Pantry	Planning committee, recipient group, food for volunteers
Miami University Associated Student Government	Marketing
Miami University Office of Residence Life	Planning committee, volunteers
Miami University Police Department	Planning committee, Chestnut Fields parking lot for dispatch/swapping site
Miami University Recreation Center	Chestnut Field House restrooms and electric
Miami University Student Affairs (Off-Campus Outreach & Communication)	Planning committee, materials
Ohio Valley Goodwill Industries	Planning committee, recipient group, recipient group storage during event, volunteers
Oxford Community Choice Pantry	Planning committee, recipient group, volunteers
Oxford Lane Library	Meeting space, technology assistance
Oxford United Methodist Church	Monetary donation, volunteers
Talawanda Football Team	Volunteers
Talawanda Lacrosse Team	Volunteers
Talawanda School District	Board, volunteers



Community

Thank you to everyone who participated in ShareFest 2018. Recognize that your contribution to this event helps individuals in need, teaches sharing and environmental ethics and awareness of diverse backgrounds, protects the environment, and helps keep Oxford clean. **Thank you!**

ShareFest 2019

Wednesday, May 15 through Tuesday, May 21, 2019

sharefestoxford.com